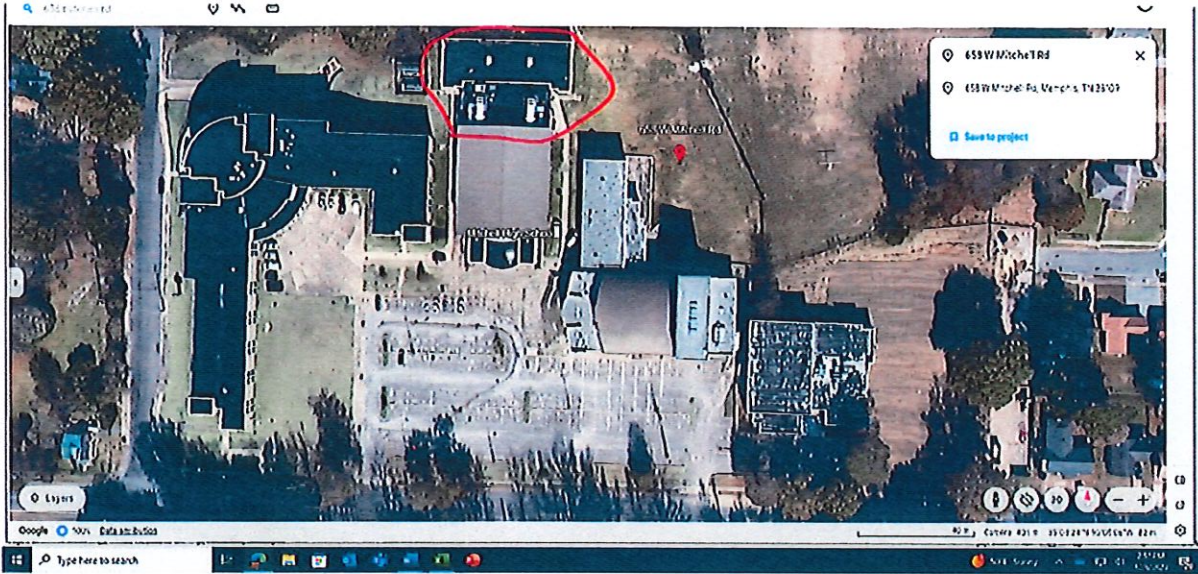


Mitchell High School



Rotten decking needs 50 x 13 feet 6 inches ISO Insulation

- Inspect the entire roof over locker rooms and classrooms of the highlighted area for visible damage.
- Seal all holes, cuts, & loose seams.
- Patch & repair any areas that are leaking.
- Repair/ replaced Flash for curbs.
- Repair/ replace Flash for pitch pockets.
- Repair/replace Flash for pipes.
- Areas previously coated will be repaired with like materials.
- Clean up Jobsite upon completion.
- Completion Date May 1,2024
- No work should be performed from April 15-May 3